

EZO™ Conductivity Circuit Wiring diagram

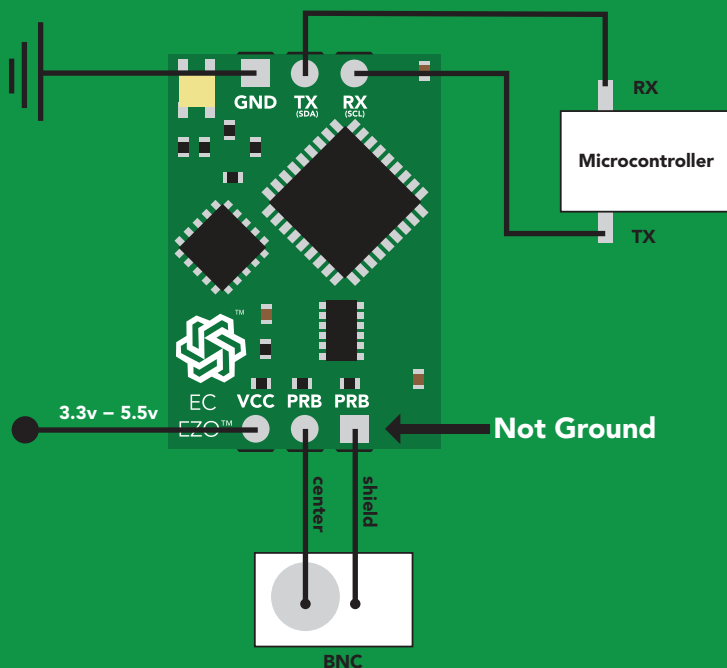
Revised 11/30/17



To connect an EZO™ Circuit to your microcontroller, follow the diagram below. Make sure the EZO™ Circuit and microcontroller share a common ground.

UART Mode

TX on the EZO™ Circuit connects to RX on your microcontroller.



I²C Mode

SDA on the EZO™ Circuit connects to SDA on your microcontroller.

SCL on the EZO™ Circuit connects to SCL on your microcontroller.

