

# EZO™ RTD Temperature Circuit Wiring diagram

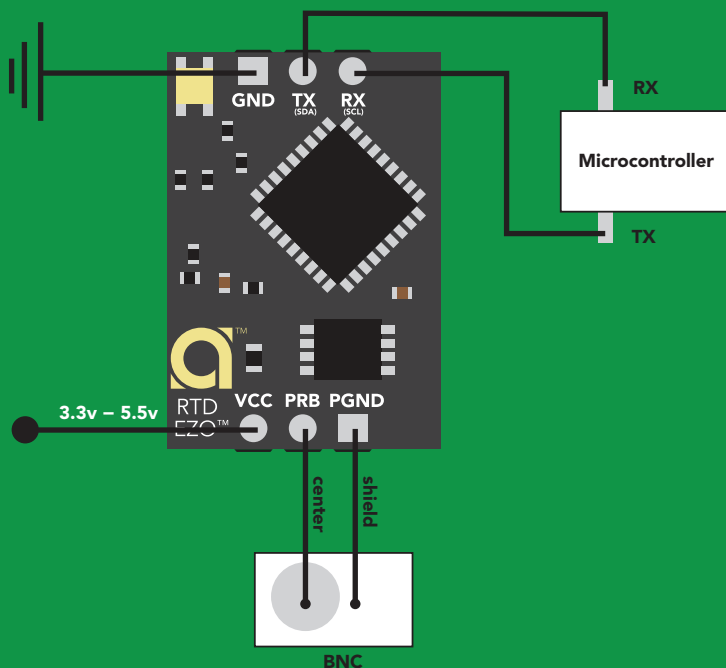
Revised 11/30/17



To connect an EZO™ Circuit to your microcontroller, follow the diagram below.  
Make sure the EZO™ Circuit and microcontroller share a common ground.  
**Isolation is not needed for the EZO™ RTD Temperature Circuit.**

## UART Mode

TX on the EZO™ Circuit connects to RX on your microcontroller.



## I<sup>2</sup>C Mode

SDA on the EZO™ Circuit connects to SDA on your microcontroller.

SCL on the EZO™ Circuit connects to SCL on your microcontroller.

